



► **2020 CENSUS AND
REDISTRICTING**

RIM OF THE WORLD RECREATION AND
PARK DISTRICT

JANUARY 24, 2022



**COOPERATIVE
STRATEGIES**
ASSESS • PLAN • FUND • BUILD

▶ DISTRICT DEMOGRAPHICS
2020 CENSUS DATA

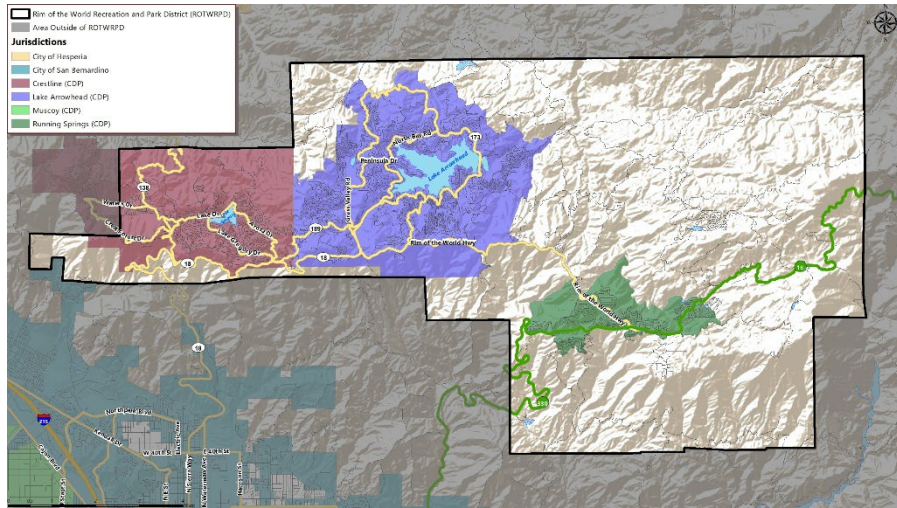


- Validated redistricting data was finalized by the California Department of Finance on September 27, 2021.
- This data showed minimal changes in the area served by Rim of the World Recreation and Park District (“ROTWRPD”) from 2010 to 2020, including:
 - Overall population growth of 1,299 (4.7%)
 - Total Variance of 9.9% based on 2020 Census (*In Compliance*)

Trustee Area	2010 Census		2020 Census		Change	
	Total	Variance	Total	Variance	Population	Percent
Trustee Area 1	5,477	-1.2%	5,647	-2.7%	170	3.1%
Trustee Area 2	5,465	-1.4%	5,828	0.4%	363	6.6%
Trustee Area 3	5,720	3.2%	5,989	3.2%	269	4.7%
Trustee Area 4	5,408	-2.4%	5,489	-5.4%	81	1.5%
Trustee Area 5	5,648	1.9%	6,064	4.5%	416	7.4%
Total Population	27,718	5.6%	29,017	9.9%	1,299	4.7%

► DISTRICT DEMOGRAPHICS

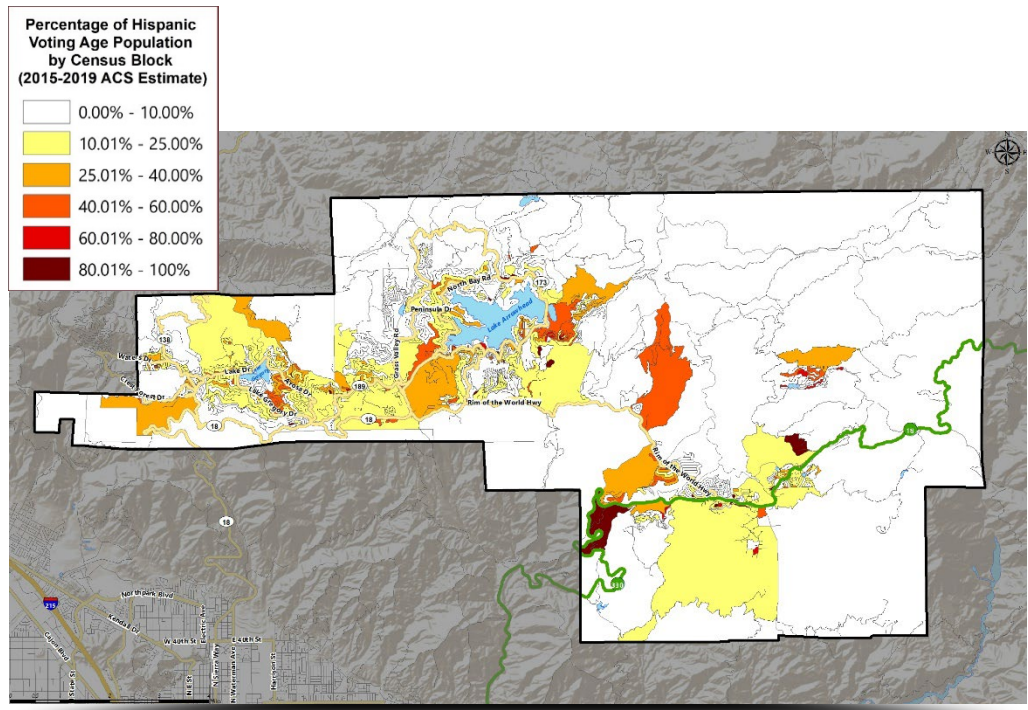
2020 CENSUS DATA



Population	Total Population		Age 18 and over	
	Total	%	Total	%
Hispanic/Latino	6,822	23.5%	4,748	20.2%
White	19,749	68.1%	16,875	71.7%
Black / African American	317	1.1%	254	1.1%
American Indian /Alaska Native	150	0.5%	140	0.6%
Asian	441	1.5%	407	1.7%
Native Hawaiian/ Pacific Islander	46	0.2%	38	0.2%
Other	206	0.7%	148	0.6%
Two or More Races	1,289	4.4%	914	3.9%
Total	29,020	100%	23,524	100%

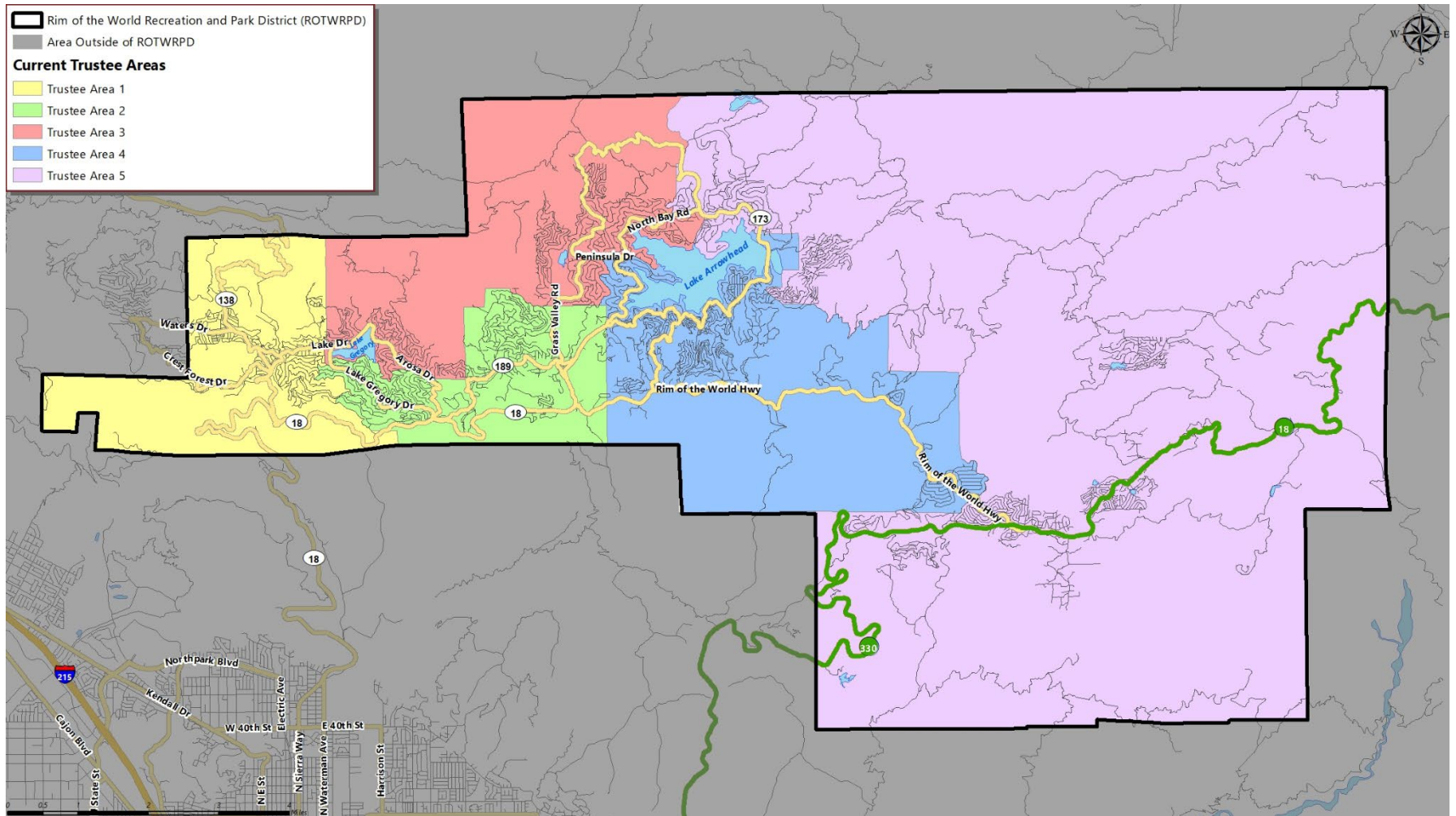
▶ DISTRICT DEMOGRAPHICS

CITIZEN VOTING AGE POPULATION ESTIMATES



Population	2015-2019 CVAP	
	Total	%
Hispanic/Latino	2,414	14.9%
White	12,880	79.3%
Black / African American	229	1.4%
American Indian / Alaska Native	188	1.2%
Asian	266	1.6%
Native Hawaiian/ Pacific Islander	40	0.2%
Two or More Races	235	1.4%
Total	16,252	100%

▶ CURRENT TRUSTEE AREAS



► CURRENT TRUSTEE AREAS

Census 2020 Total Population:	29,020	Ideal Trustee Area Size:	5,804	Total Variance:	9.9%
----------------------------------	--------	-----------------------------	-------	-----------------	------

TRUSTEE AREA	Trustee Area 1		Trustee Area 2		Trustee Area 3		Trustee Area 4		Trustee Area 5	
TP* vs. CVAP**	TP	CVAP	TP	CVAP	TP	CVAP	TP	CVAP	TP	CVAP
Population	5,650	3,296	5,825	3,447	5,992	3,528	5,489	2,868	6,064	3,113
Population Variance	-2.7%	N/A	0.4%	N/A	3.2%	N/A	-5.4%	N/A	4.5%	N/A
Hispanic/Latino	27.4%	14.2%	28.1%	17.5%	19.1%	11.7%	21.8%	16.4%	21.4%	14.8%
White	64.6%	81.7%	64.1%	75.4%	71.7%	82.2%	71.5%	78.2%	68.4%	78.5%
Black/African American	1.1%	1.3%	1.1%	1.0%	1.0%	2.4%	1.0%	1.2%	1.3%	1.1%
American Indian/Alaska Native	0.6%	0.6%	0.5%	2.9%	0.5%	0.7%	0.4%	0.1%	0.6%	1.3%
Asian	1.6%	1.7%	1.4%	2.5%	1.7%	1.0%	0.9%	0.9%	2.0%	2.0%
Native Hawaiian/Other Pacific Islander	0.1%	0.0%	0.1%	0.0%	0.2%	0.0%	0.2%	1.4%	0.3%	0.0%
Other	0.6%	N/A	0.7%	N/A	0.8%	N/A	0.6%	N/A	0.9%	N/A
Two or More Races	3.9%	0.6%	4.1%	0.7%	5.1%	2.0%	3.8%	1.7%	5.1%	2.3%

*Total Population; Source: Redistricting Database for California, Published by Statewide Database on September 20, 2021

**Citizen Voting Age Population (CVAP); Source: American Community Survey, 2015-2019 Data

► **TIMELINE**

RED TASKS ARE OPTIONAL GIVEN TRUSTEE AREAS ARE IN COMPLIANCE.

DATE	ACTIVITY
January 24, 2022	Board Meeting: Presentation on Evaluation of Existing Voting Areas Conduct Public Hearing Receive Input on Potential Adjustments
January 24 - February 20, 2022	Cooperative Strategies prepares potential maps of adjusted Voting Areas
February 21, 2022	Draft Maps Posted to ROTW Website
February 28, 2022	Board Meeting: Review Scenarios and Conduct Public Hearing
February 28-March 15, 2022	Cooperative Strategies revises scenarios based on Board and Public Input
March 28, 2022	Board Meeting: Review Maps and Conduct Public Hearing Board Selection of Map
April 15, 2022	Deadline for Board to approve Voting Area adjustments

A row of yellow school buses is parked in a grassy field under a blue sky with scattered white clouds. A large, semi-transparent, stylized letter 'S' is overlaid on the image, centered horizontally. The word 'QUESTIONS' is written in white, uppercase, sans-serif font across the middle of the 'S'.

QUESTIONS